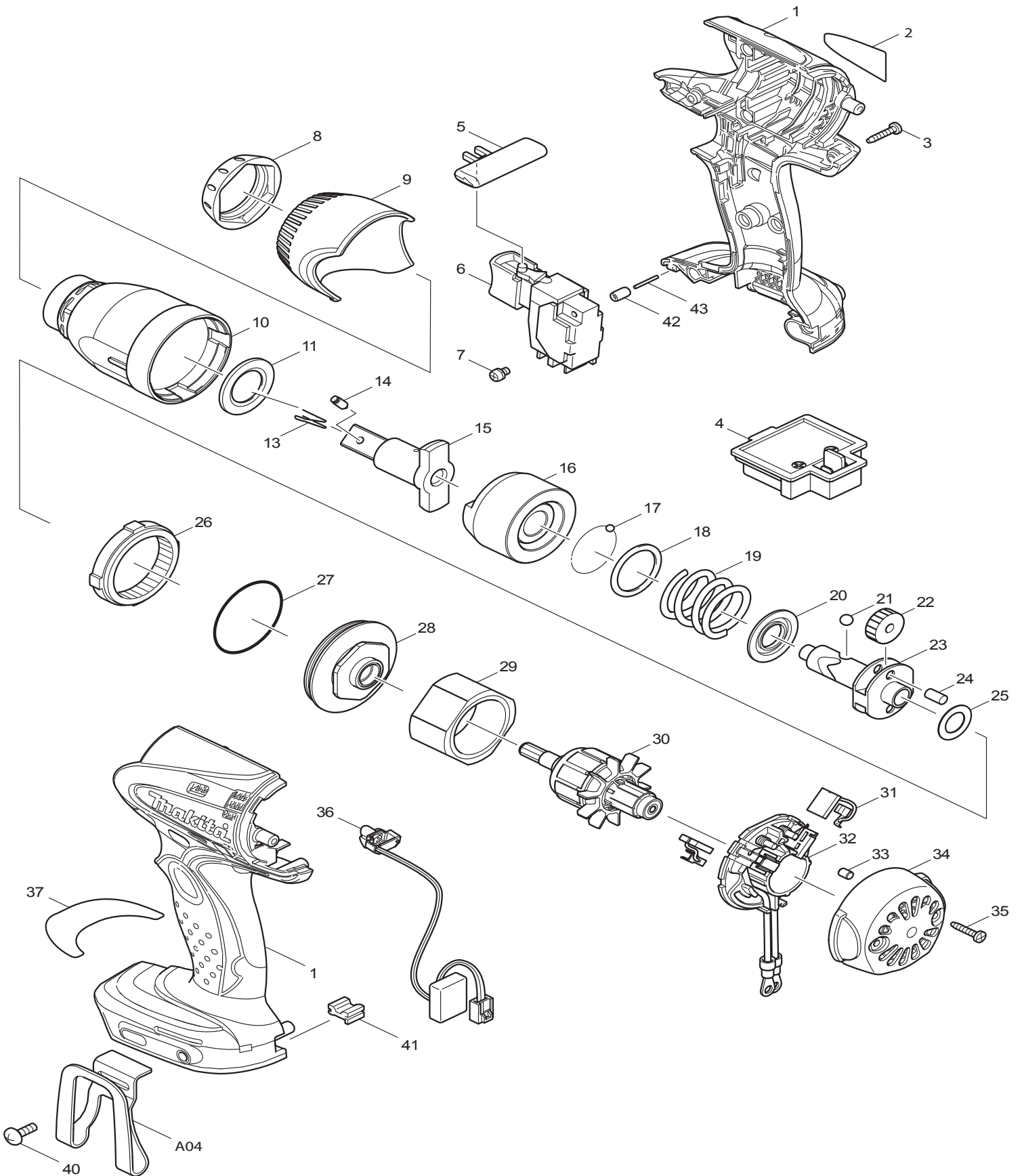




04 -2014
DTW251XRFE, DTW251ZX1
18V 1/2" IMPACT WRENCH (FLAT PIN)



Item No	Type	Ref	Ref Part No	Description	Qty	Unit
001			188243-5	HOUSING SET	1	SET
		INC.	263005-3	RUBBER PIN 6	2	PC.
002			815E48-7	NAME PLATE F/DTW251	1	PC.
003			266130-9	TAPPING SCREW BIND PT 3X16	8	PC.
004			643852-2	TERMINAL	1	PC.
005			419041-9	F/R CHANGE LEVER	1	PC.
006			650652-3	SWITCH TG553FSB-1B	1	PC.
007			652045-0	+PAN HEAD SCREW M3.5X5	2	PC.
008			424375-7	BUMPER	1	PC.
009			452439-7	HAMMER CASE COVER	1	PC.
010			140171-2	HAMMER CASE COMPLETE	1	PC.
011			261116-8	NYLON WASHER 18	1	PC.
013			322045-1	CLIP	1	PC.
014			268098-5	PIN 4 (FLAT HEAD)	1	PC.
		Opt.	323675-1	PIN 4 (ROUND HEAD)	1	PC.
015			324704-3	ANVIL	1	PC.
016			324703-5	HAMMER	1	PC.
017			216001-0	STEEL BALL 3.5	24	PC.
018			267175-0	FLAT WASHER 24	1	PC.
019			234337-5	COMPRESSION SPRING 25	1	PC.
020			267766-7	CUP WASHER 14	1	PC.
021			216011-7	STEEL BALL 5.6	2	PC.
022			227233-4	SPUR GEAR 22	2	PC.
023			324220-5	SPINDLE	1	PC.
024			256253-1	PIN 5	2	PC.
025			267212-0	FLAT WASHER 12	1	PC.
026			227150-8	INTERNAL GEAR 51	1	PC.
027			213507-9	O RING 40	1	PC.
028			158145-9	BEARING BOX COMPLETE	1	PC.
029			638495-3	YORK UNIT	1	PC.
030	1		619253-6	* ARMATURE	1	PC.
	2		619375-2	* ARMATURE	1	PC.
031	1		196855-0	* CARBON BRUSH CB-448 2PC/SET, W/ ORIGIN	1	SET
	2		198887-3	* CARBON BRUSH CB-448 2PC/SET, W/ ORIGIN	1	SET
032	2		632G49-0	* BRUSH HOLDER COMPLETE	1	PC.
		INC.	689181-9	SPACER (Added - N/A Individually)	2	PC.
		INC.		* Item No. 31 (Type 1)		
	3		632L18-1	* BRUSH HOLDER COMPLETE	1	PC.
		INC.		* Item No. 31 (Type 2)		
033			263032-0	RUBBER PIN 4	2	PC.
034			418981-8	REAR COVER	1	PC.
035			266130-9	TAPPING SCREW BIND PT 3X16	2	PC.
036			631693-8	LIGHT CIRCUIT	1	PC.
037			802V69-0	CAUTION LABEL	1	PC.
040			251314-2	+ SCREW M4X12	1	PC.
041			424026-2	CUSHION	1	PC.
042			263036-2	RUBBER PIN 5	1	PC.
043			268184-2	PIN 1.5	1	PC.
C01C			875466-1	CARTON FOR DTW251RFE	1	PC.

Item No	Type	Ref	Ref Part No	Description	Qty	Unit
<u>ACCESSORIES</u>		- See catalogue or visit www.makita.ca for more accessories information -				
A01			-----	BATTERY CHARGER		
A02			-----	18V LI-ION BATTERY		
A03			141205-4	PLASTIC CARRYING CASE COMPLETE	1	PC.
	INC.		324207-7	SHAFT	1	PC.
	INC.		413098-2	PLATE	4	PC.
	INC.		417724-5	LATCH	2	PC.
	INC.		419215-2A	PLASTIC CASE LID, TAB TYPE	1	PC.
	INC.		419216-0	HANDLE	1	PC.
A03A		1	142146-7	PLASTIC CARRYING CASE COMPLETE (N/A)	1	PC.
			802T33-9	DTW251RFE MODEL NO. LABEL (N/A)	1	PC.
		2	824812-5	PLASTIC CARRYING CASE COMPLETE	1	PC.
A04			346449-3	HOOK F/ 14.4, 18V BATTERIES	1	PC.
A05			-----	LI-ION BATTERY ACCESSORIES		
A06			-----	1/2" IMPACT WRENCH ACCESSORIES		
A07			194485-1	FLAT PIN 4 SET(SEE INSTRUCTION MANUAL 194485-1)	1	PC.
	INC.		268098-5	PIN 4, FLAT HEAD	1	PC.
	INC.		322045-1	CLIP	1	PC.
	INC.		345842-8	HOOK(NOT AVAILABEL AS AN INDIVIDUAL PART)	1	PC.
A08			-----	DEEP DRIVE SOCKETS		
A09			-----	WORK GLOVES		

SERVICE CHANGES

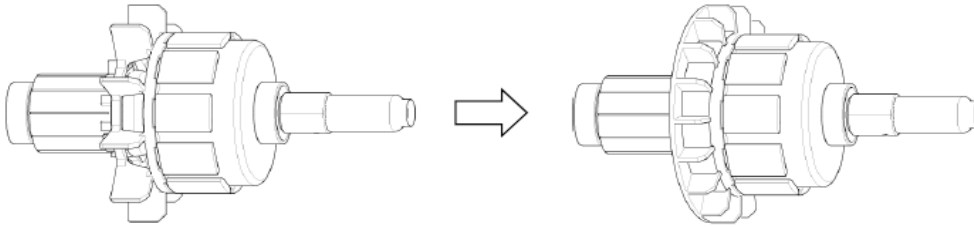
1. Changes on Armature

(T/I# A7514)

Item No.	Description	Type 1	Type 2
30	Armature	619253-6	619375-2

Type 1

Type 2



SERVICE CHANGES

1. Changes on Brush Holder Complete

(TI# B1033)

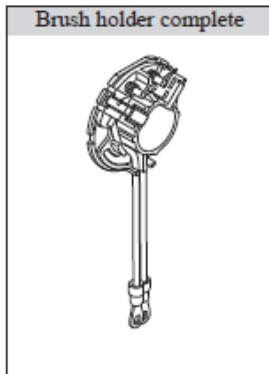
(TI# C4463)

Item No.	Description	Type 1	Type 2	Type 3
32	Brush Holder Complete	638498-7	632G49-0	632L18-1
32_INC.	Spacer	-----	689181-9	---
31	Carbon Brush	196855-0	196855-0	198887-3

Above parts are completely interchangeable as a set.

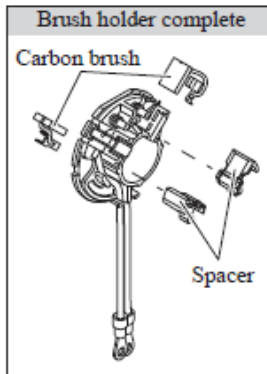
Type 1

- Without Spacer
- Without Carbon brush



Type 2

- With Spacer
- With Carbon brush



**Type 3 - Spacer removed*